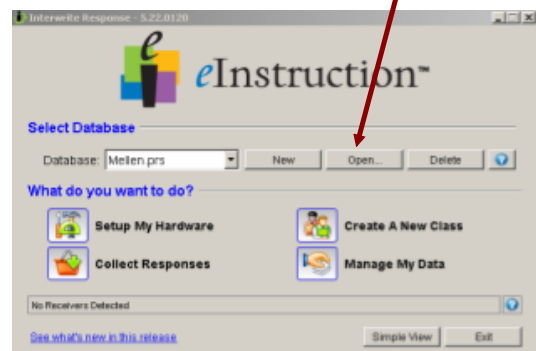


How to Use Response with a USB Drive

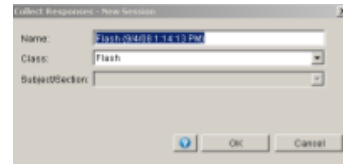
Easy Step Guide:

1. Place the **USB Receiver** in the USB port
2. Place the **USB Drive** in the USB port
3. Open the Response software from the desktop
4. Open your Database
(Ignore any Database Error Messages - Click OK)
Response will launch and open the Main Screen
(You may minimize the main screen)



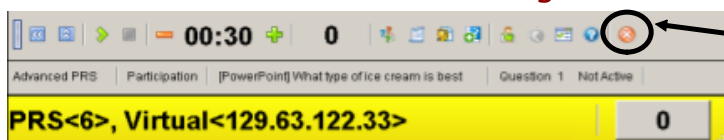
Using PowerPoint with Response:

1. Follow Steps 1-4 (above)
2. Open the **PowerPoint** presentation and begin the slide show
3. Click **Yes** to activate the Response session
4. Open the correct Class to begin the New Session
5. The Session Toolbar will appear (it might take 30 seconds)
6. Have your students **join the class** using the Join Code appearing in the <?> on the RF Status Bar
7. When you have finished asking questions or your PowerPoint lecture has finished click **End Session and End the Class.**

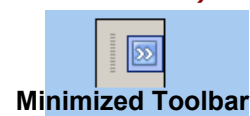


(Failure to do so will result in data loss!!)

Please be aware the Session Toolbar might have minimized (click to maximize)



End
Session



Minimized Toolbar