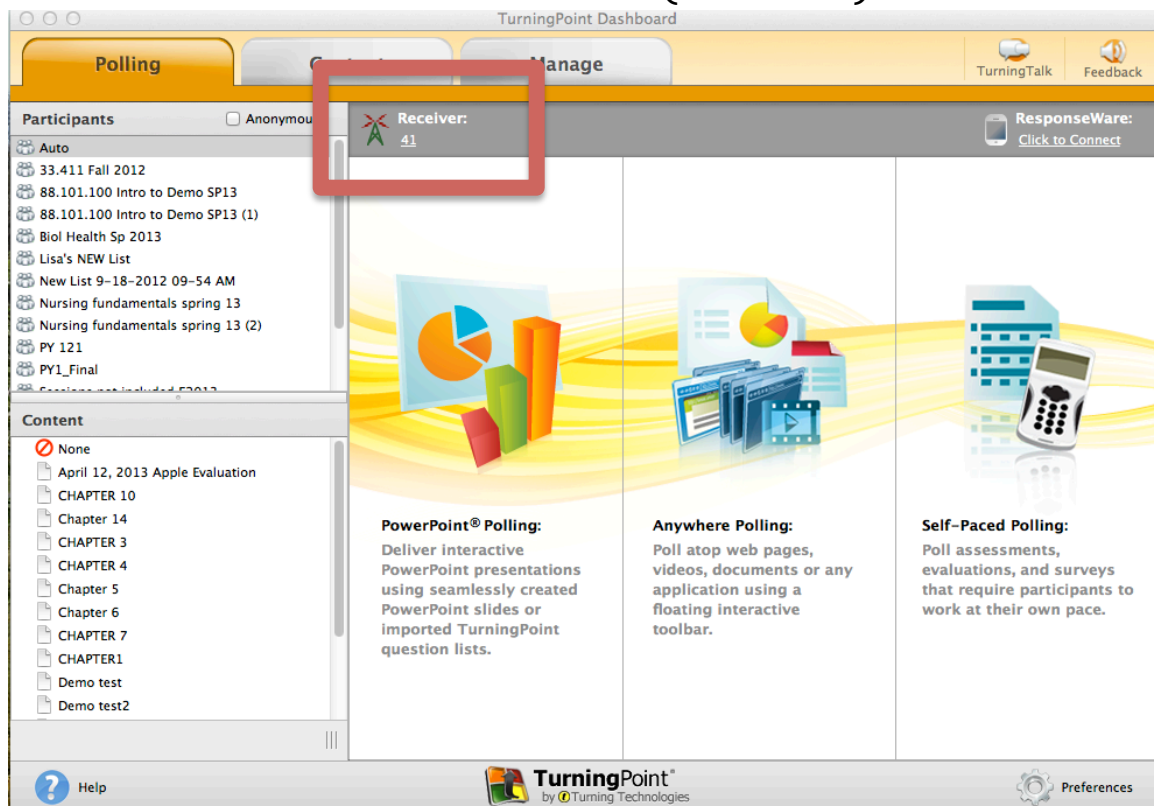


## TurningPoint5 How to Change the Receiver Channel

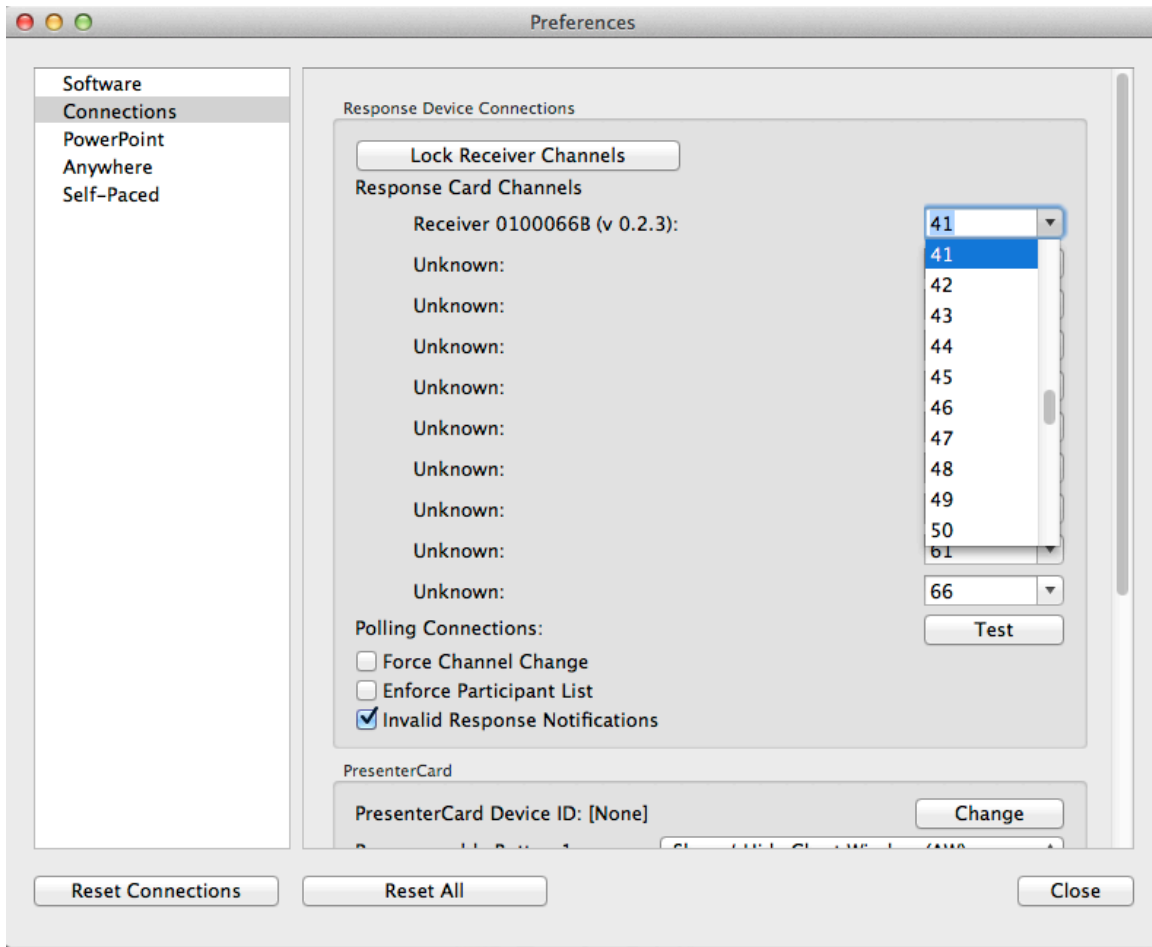
TP5 default channel is 41. To avoid interference, changing the channel is highly recommended. Please contact [Donna\\_Mellen@uml.edu](mailto:Donna_Mellen@uml.edu) if you need a channel number.

How to Change the Receiver Channel:

1. Open TP5
2. Click on the Receiver Number (see below):



3. The Response Device Connections Preferences Dialog Box Opens.



4. Select the new channel number from the drop down arrow.
5. Select Close.
6. The new channel number will appear on the dashboard.
7. Please remind your students to change their NXT channel on the first day and continue to remind them at the beginning of each session. **Please refer to Student Instructions below.**

## Changing Channels -- NXT Clicker

1. Press the channel button.



2. Type in the number of the correct channel. As you type in the number it will appear in the box on the screen.



3. Press the silver button in the center of the arrow keys.



4. A message will appear on your screen showing that the channel has been changed successfully.

